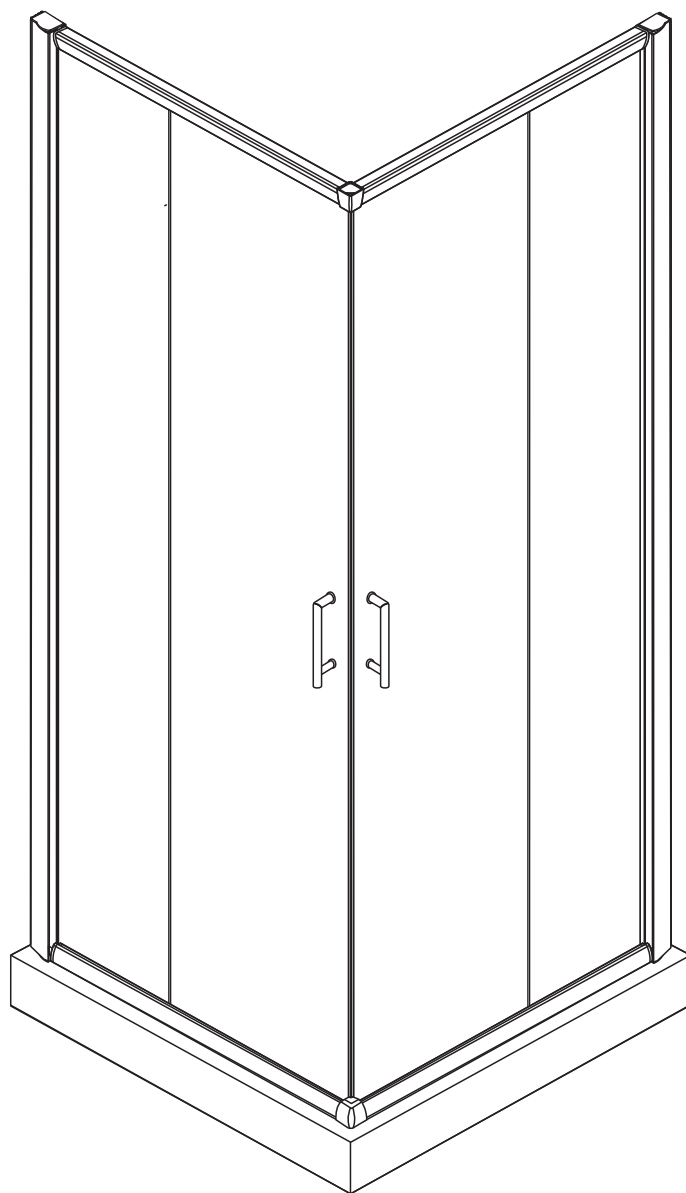


INSTALLATION INSTRUCTIONS

LONDON BOX



◆ General Information

Please inspect the product immediately upon receipt for transit damage, missing packs/parts or manufacturing fault. Damage reported later cannot be accepted. Please handle the product with care avoiding knocks and shock loading to all sides and edges of the glass.

Notes: Safety glass can not be re-worked.

Please read these instructions carefully before start of installation.

Special care should be taken when drilling walls to avoid hidden pipes or electrical cables.

Note: This product is heavy and may require two people to install.

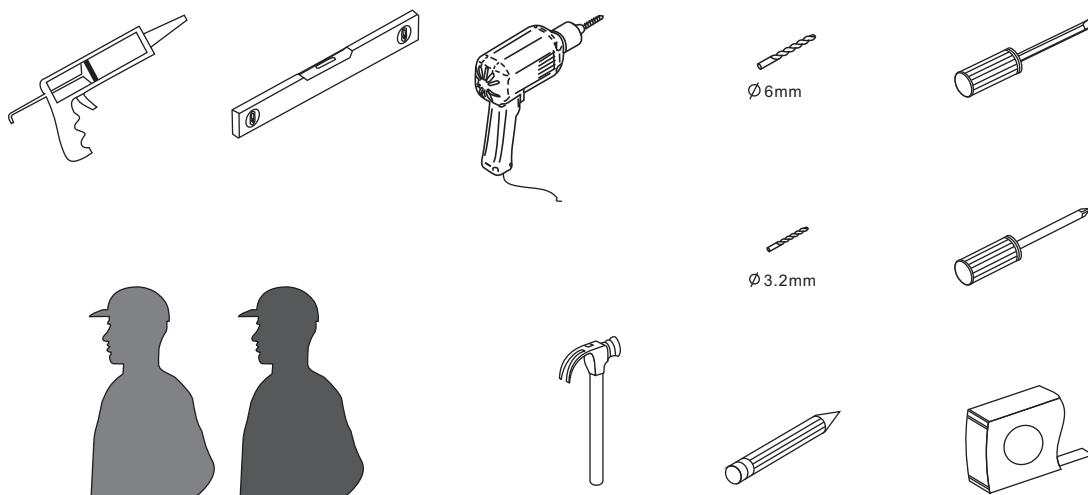
Aftercare instructions

After use, your shower should be cleaned with soap and water. This is particularly important in hard water districts where insoluble lime salts may be deposited and allowed to build up. Cleaners of a gritty or abrasive nature should not be used. Care should be taken to avoid contact with strong chemicals such as organic solvents and strippers.

Glass cleaners can be used but with caution, if in doubt contact the manufacturer of the cleaner in question.

Please keep these instructions for aftercare and customer service details.

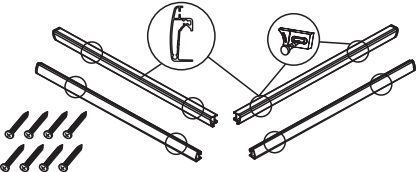


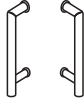




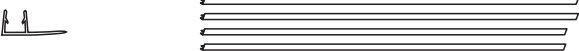


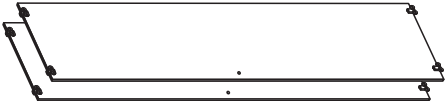

Tools Required



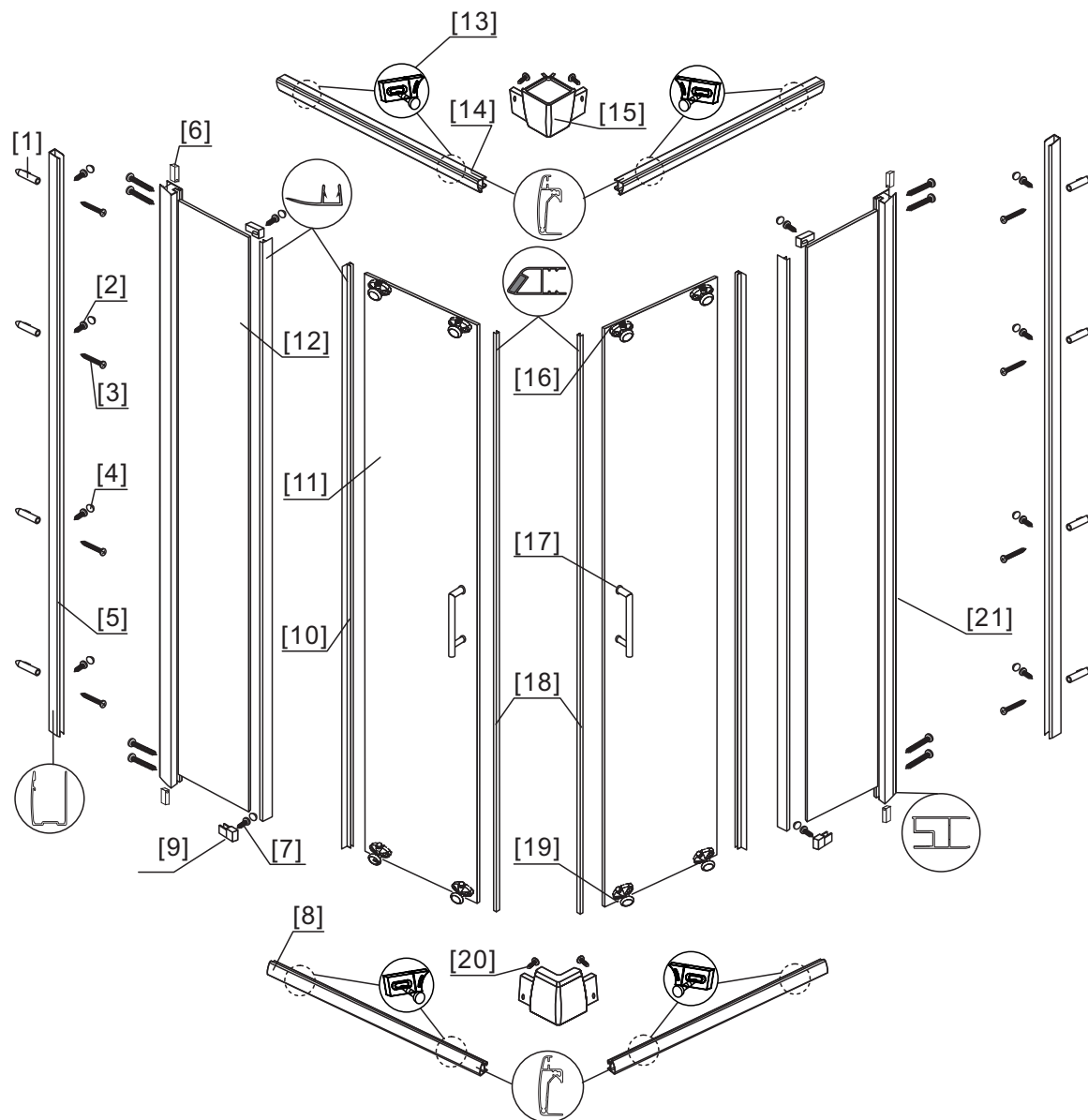
This product is heavy and may require two people to install.



◆ Box Contents:

<p>[1] 2xTop Horizontal Rails. 2xBottom Horizontal Rails. 8xScrews M4x35.</p>	➔	
<p>[2] 4xTop Rollers 4xBottom Rollers</p>	➔	
<p>[3] 1xInstallation Instruction.</p>	➔	
<p>[4] 2xHandle Sets.</p>	➔	
<p>[5] 8xWall Plugs. 8xScrews M4x35.</p>	➔	
<p>[6] 8xScrews M4x8. 8xScrew Cover Caps.</p>	➔	
<p>[7] 2xCorer Connectors. 4xScrews M4x8.</p>	➔	
<p>[8] 2xMagnetic Seals.</p>	➔	
<p>[9] 4xWater Deflectors.</p>	➔	
<p>[10] 2xWall Posts.</p>	➔	
<p>[11] 2xFixed Panels.</p>	➔	
<p>[12] 2xDoor Panels.</p>	➔	
<p>[13] 4xBumper Blocks. 4xScrews M4x12</p>	➔	

◆ Assembly Drawing

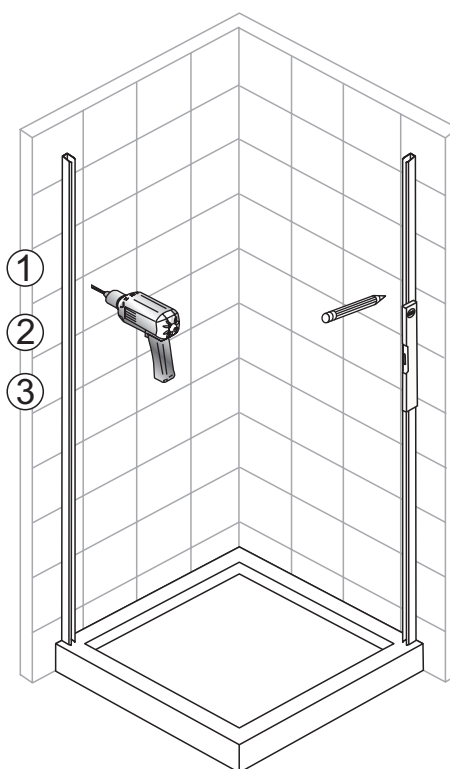
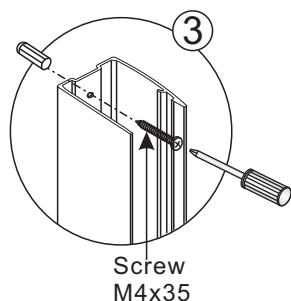
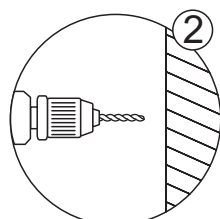
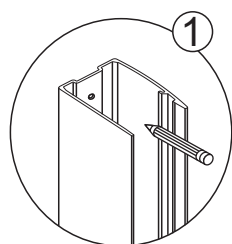


- [1] 8xWall Plugs.
- [2] 8xScrews M4x8.
- [3] 16xScrews M4x35.
- [4] 12xScrew Cover Caps.
- [5] 2xWall Posts.
- [6] 4xSealed Gum Lumps.
- [7] 4xScrews M4x12.
- [8] 2xBottom Horizontal Rails.
- [9] 4xBumper Blocks.
- [10] 4xWater Deflectors.
- [11] 2xDoor Panels.

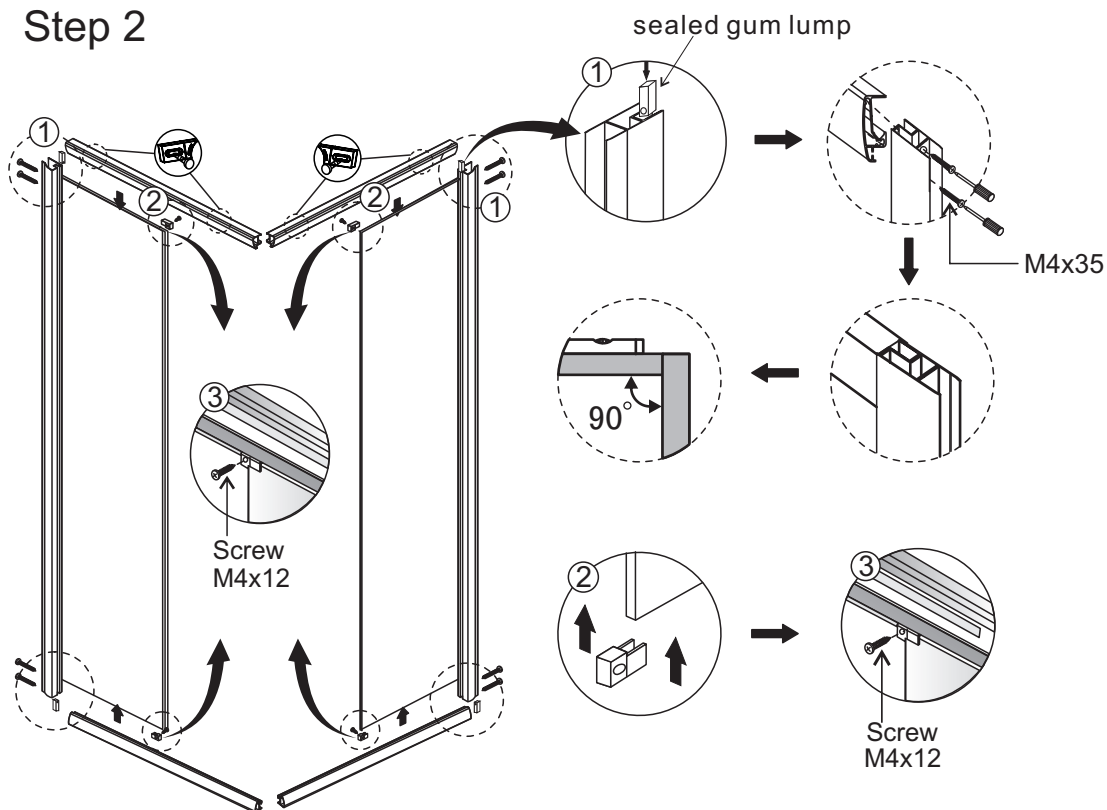
- [12] 2xFixed Panels.
- [13] 8xSet pieces.
- [14] 2xTop Horizontal Rails.
- [15] 2xCorer Connectors.
- [16] 4xTop Rollers.
- [17] 2xHandle Sets.
- [18] 2xMagnetic Seals.
- [19] 4xBottom Rollers.
- [20] 4xScrews M4x8.
- [21] 2xPosts.

◆ Installation Steps:

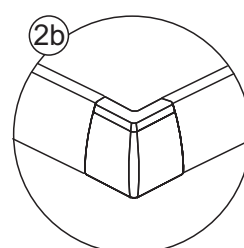
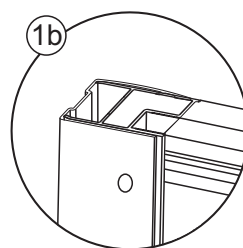
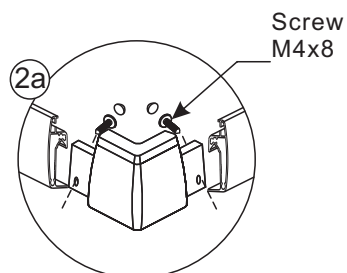
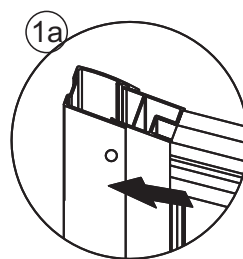
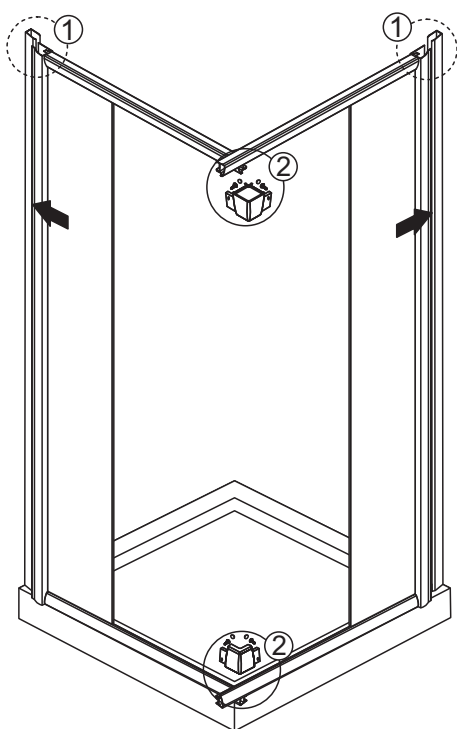
Step 1



Step 2

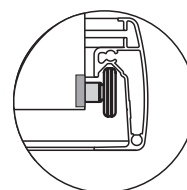
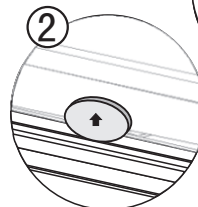
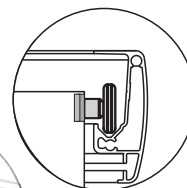
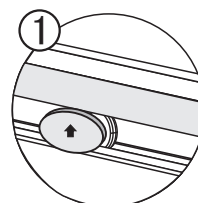
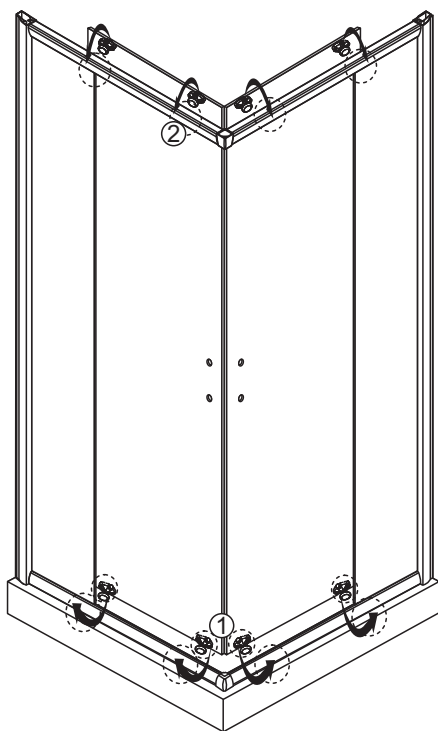


Step 3

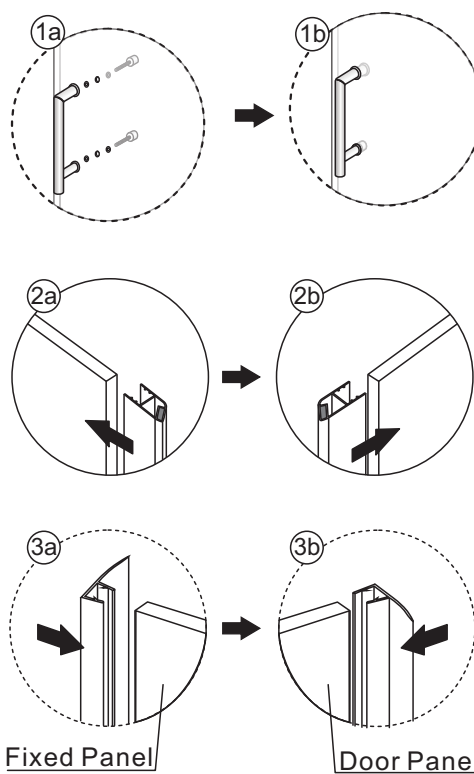
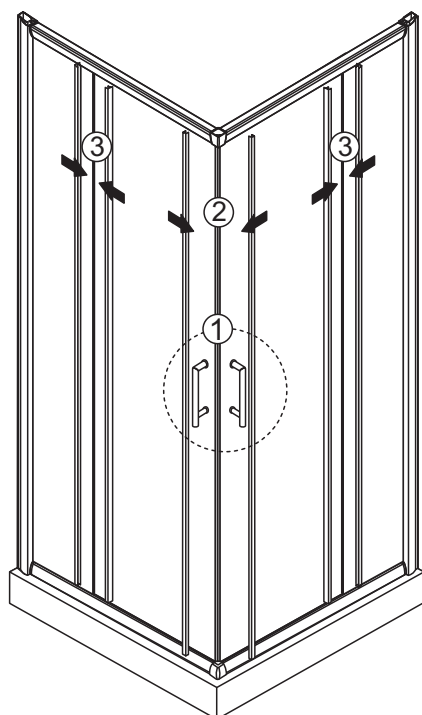


View from inside

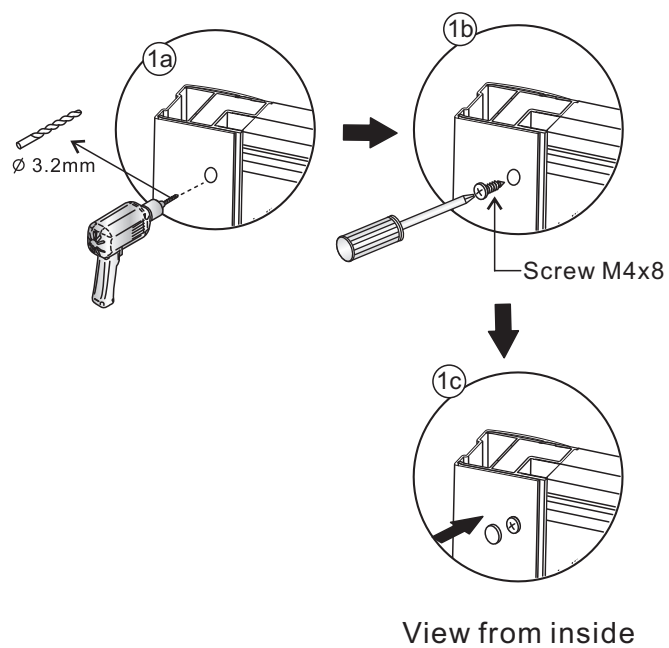
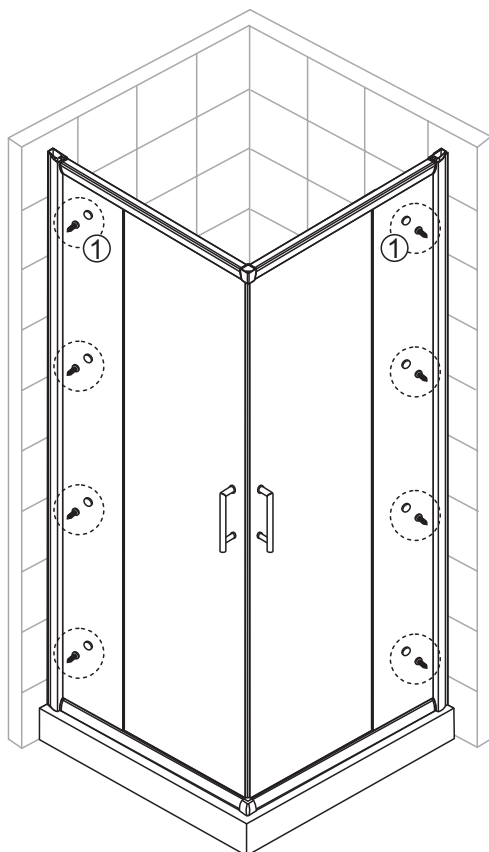
Step 4



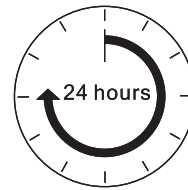
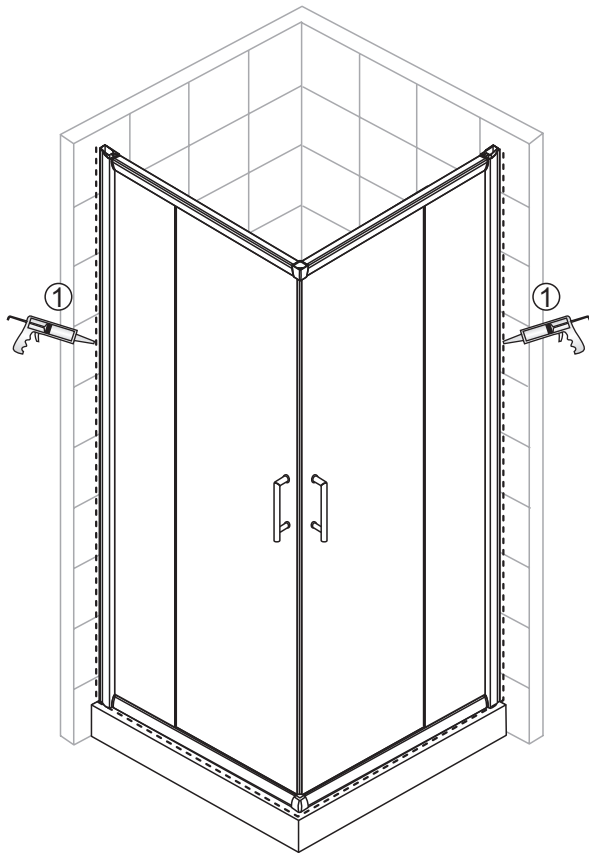
Step 5



Step 6



Step 7



Allow 24 hours for silicone to dry before use.