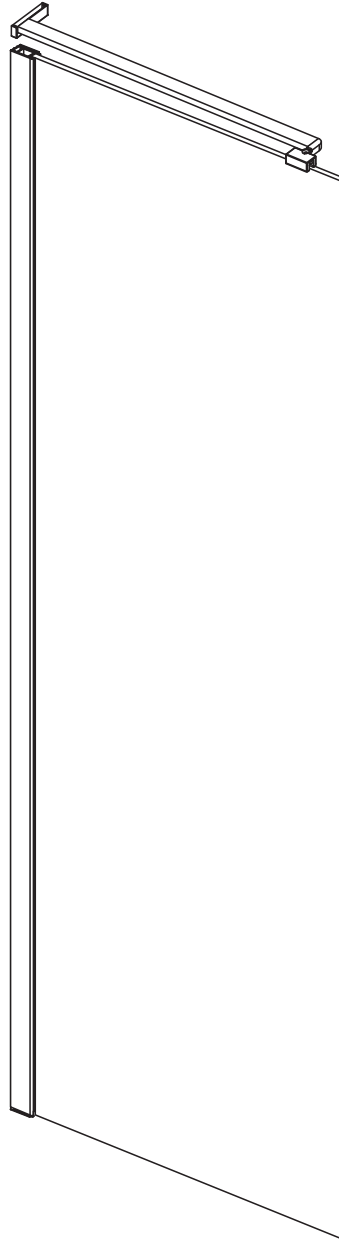


INSTALLATION INSTRUCTIONS

10MM Fixed Bath Screen



Size:800x1500

◆ General Information

Please inspect the product immediately upon receipt for transit damage, missing packs/parts or manufacturing fault. Damage reported later cannot be accepted. Please handle the product with care avoiding knocks and shock loading to all sides and edges of the glass.

Notes: Safety glass can not be re-worked.

Please read these instructions carefully before start of installation.

Special care should be taken when drilling walls to avoid hidden pipes or electrical cables.

Note: This product is heavy and may require two people to install.

Aftercare instructions

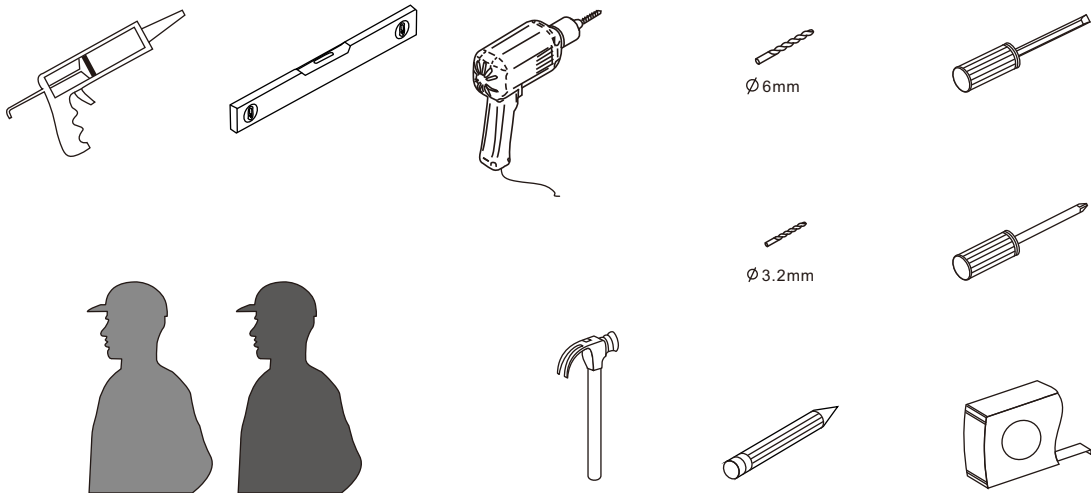
After use, your shower should be cleaned with soap and water. This is particularly important in hard water districts where insoluble lime salts may be deposited and allowed to build up.

Cleaners of a gritty or abrasive nature should not be used. Care should be taken to avoid contact with strong chemicals such as organic solvents and strippers.

Glass cleaners can be used but with caution, if in doubt contact the manufacturer of the cleaner in question.

Please keep these instructions for aftercare and customer service details.

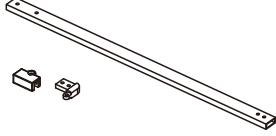




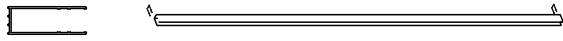

Tools Required



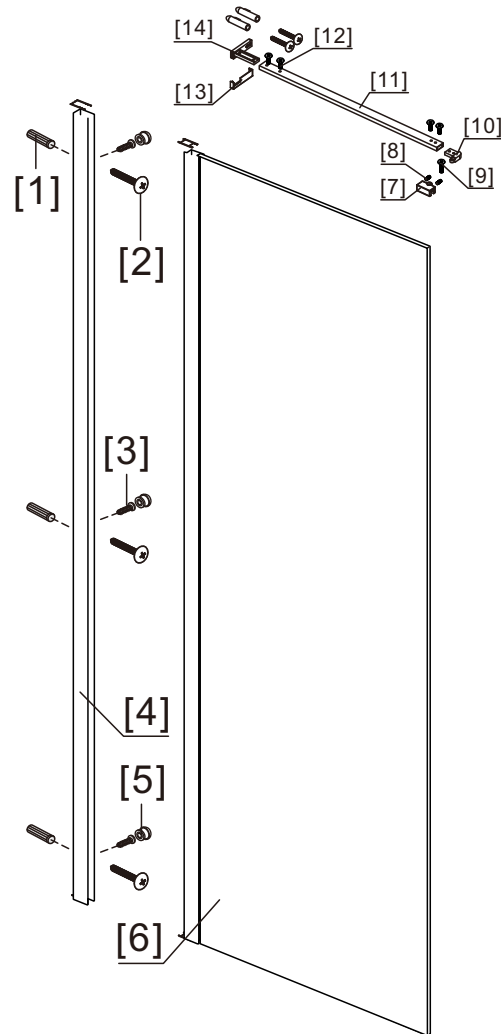
This product is heavy and may require two people to install.



◆ Box Contents:

<p>[1] 1xBracket. 1xGlass Connect Clip. 1xCorner Connect.</p>	<p>➔</p>	
<p>[2] 2xWall Connectors. 2xWall Connector Covers.</p>	<p>➔</p>	 <p>*The Wall connector has right and left please choose the compatibly one to install.</p>
<p>[3] 1xInstallation Instruction.</p>	<p>➔</p>	
<p>[4] 5xWall Plugs. 5xFlat Screws M4x35.</p>	<p>➔</p>	
<p>[5] 1xBrad Screw M5x16. 4xBrad Screws M5x12.</p>	<p>➔</p>	
<p>[6] 1xWall Post.</p>	<p>➔</p>	
<p>[7] 1xFixed Panel.</p>	<p>➔</p>	

◆ Assembly Drawing

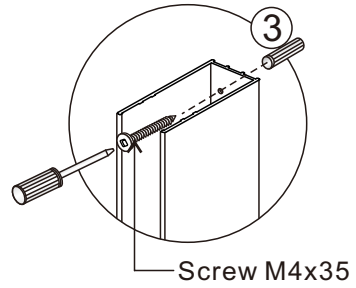
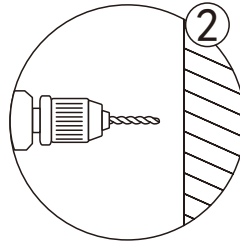
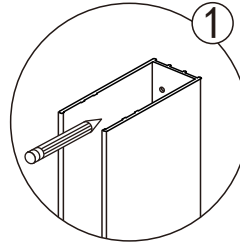
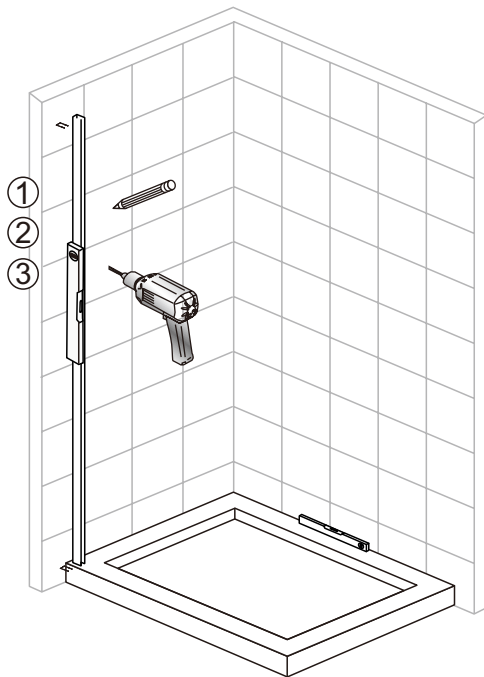


- [1] 6xWall Plugs
- [2] 5xScrews M4x35
- [3] 3xScrews M4x10
- [4] 1xWall Post
- [5] 3xScrew Cover Caps
- [6] 1xFixed Panel
- [7] 1xGlass Connect Clip

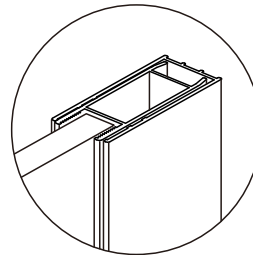
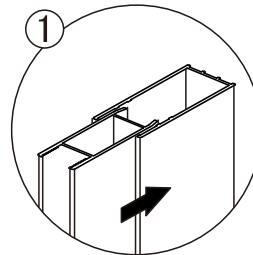
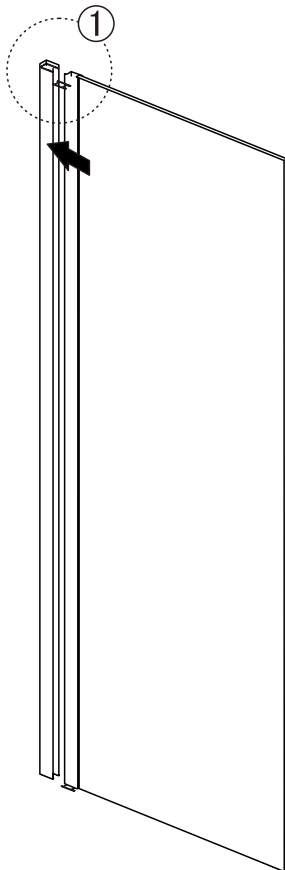
- [8] 2xScrews M10x8
- [9] 1xBrad Screw M5x16
- [10] 1xCorner Connect
- [11] 1xBracket
- [12] 4xBrad Screw M5x12
- [13] 1xWall Connector Cover
- [14] 1xWall Connector

◆ Installation Steps

Step 1

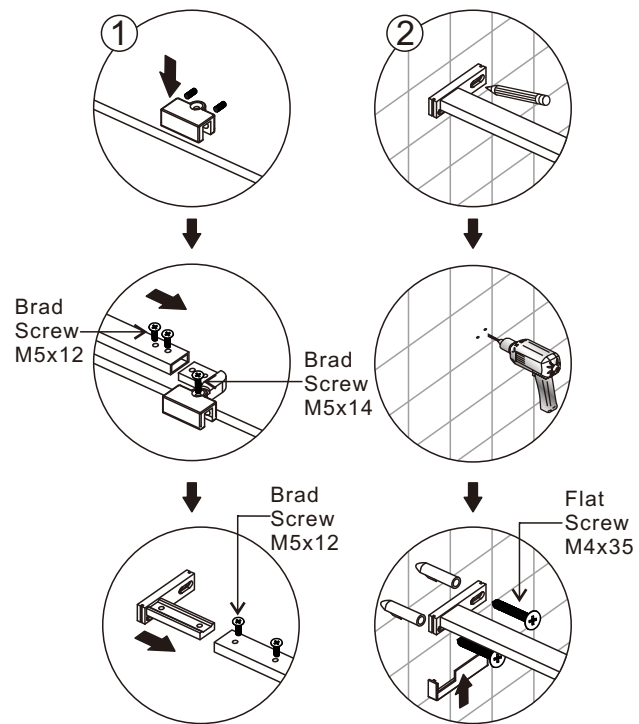
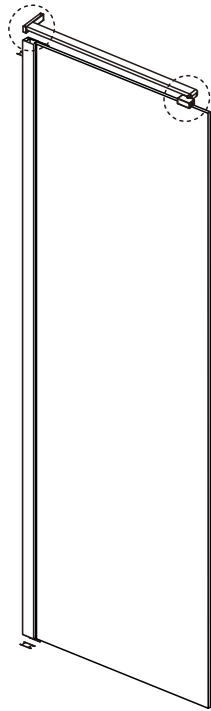


Step 2

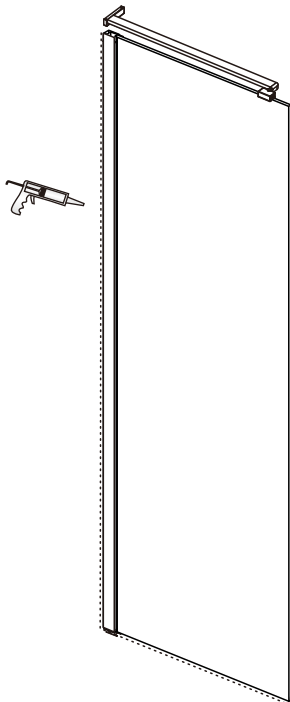


View from inside

Step 3



Step 4



Allow 24 hours for silicone to dry before use.